

Outfox the Market – Meter Guide – 2021

Different Types of Meters

Electricity

Standard Single-Rate Meter / Non-Digital/Analog



These meters are most common in domestic properties.

We will only need the meter readings in the black area and not the red.

Standard Two-Rate Meter / Non-Digital/Analog



These meters are most common in domestic properties.

We will only need the meter readings in the black area and not the red.

The Day/Normal reading counts the usage over 17 Day hours.

The Night/Low reading counts the usage over the 7 Night hours.

Standard Single-Rate Meter / Smart Meter



These meters are most common in domestic properties.

We will only need the meter reading before the decimal point and in kWh.

How to take a meter reading:

You will need to press the number 9 on the keypad.

It will bring up 'IMP kWh' or 'IMP R01' on the screen, followed by just one reading in kWh.

The reading will usually be 5 digits long.

Standard Two-Rate Meter / Smart Meter



These meters are most common in domestic properties.

We will only need the meter reading before the decimal point and in kWh.

How to take a meter reading:

You will need to press the number 6 on the keypad 4 times.

It will bring up 'IMP R01' on the screen followed by the first reading itself in kWh (as a rule this will be the Night/Low reading), and then 'IMP R02' on the screen followed by the second reading in kWh (as a rule this will be your Day/Normal reading).

Each reading will usually be 8 digits long.

Gas

Standard Meter / SMETS1 Smart Meter



These meters are most common in domestic properties.

We will only need the meter reading before the decimal point and in m3.

How to take a meter reading:

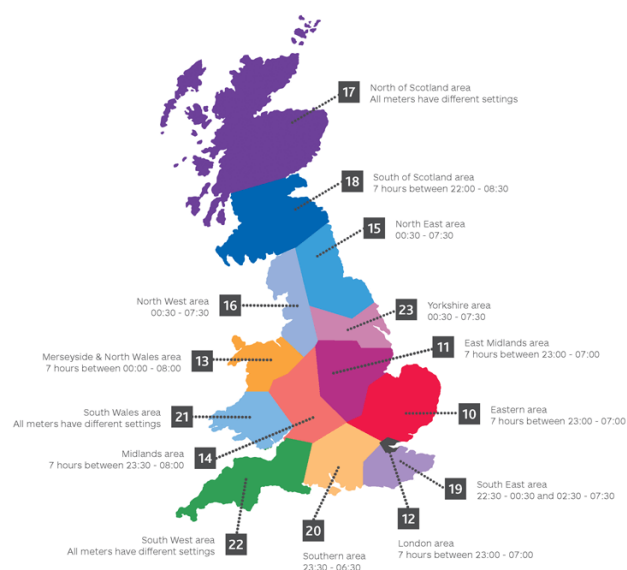
You will need to press the number 9 on the keypad.

It will bring up 'VOLUME' on the screen, followed by the reading in m3.

The reading will usually be 4 digits long.

Economy 7/Off-Peak Hours

The below map (zoom in) will give you a rough idea of the off-peak times for each region. That being said to get accurate information you should ask Outfox the Market to check on the database.



Email: hello@outfoxthemarket.co.uk

Telephone: 0800 103 2702

Monday to Friday 08:30 - 17:00

Saturday 09:00 - 14:00

Sunday - Closed

Outfox the Market is a trading name of Foxglove Energy Supply Ltd. Foxglove Energy Supply Ltd is registered in England and Wales. Company registration number 09689035, VAT number: 245844682 Registered office address 16 North Mills, Frog Island, Leicester, Leicestershire, England, LE3 5DL